

INSIDE K&A

| ISSUE 01 January 2015

| Khatib & Alami Newsletter



Akaria
Mixed-Use Building
KSA

Waterfront City
LEBANON

A Solar Powered
Achievement: BRSS Project
LEBANON

Improving Al Andalus
and King Abdullah
Road Corridors
KSA

Enterprise GIS
for OETC
OMAN



خطيب و علمي
Khatib & Alami

CONTENTS

| ISSUE 01 January 2015

4 | ARCHITECTURE

Akaria Mixed-Use Building, KSA
Qatar University - New Student Affairs Building, QATAR
Al Batha Tower, UAE

10 | URBAN & REGIONAL PLANNING

A Landmark Development - Waterfront City, LEBANON
Schools Master Plan for the State of Qatar - Intelligent Solutions for Education, QATAR
Rehabilitation and Beautification of Manger Square, PALESTINE

16 | WATER & ENVIRONMENT

Assir Strategic Master Plan - Phase II, KSA
A Solar Powered Achievement: BRSS Project, LEBANON
Yanbu Emergency Sewer Plan, KSA

19 | INFRASTRUCTURE

Developing Roads and Infrastructure, UAE

20 | TRANSPORTATION

Improving Al Andalus and King Abdullah Road Corridors, KSA
A Truly Unique Public Transportation Project, KSA

24 | ENERGY & UTILITIES

Enterprise GIS - Design and Procedure Development for Oman Electricity Transmission Company, OMAN

26 | NEWS

Live Smarter with GIS
Going Platinum and Sharing Expertise: Esri Middle East and Africa User Conference
Jazan GIS Project Award and Presentation
ENR 2014 Rankings
K&A Energy Ambassador of the Year
Winning the Public in Algeria at SITP 2014



 Final Design

AKARIA

Mixed-Use Building - Riyadh, KSA

An Iconic Building Design

Khatib & Alami (K&A) designed a mixed-use landmark building located on one of Riyadh's main spines: the Sateen road. The design of this iconic building for real estate firm, Al Akaria, features different alternatives and approaches for the landmark building that deal with the strategic location of the lot as well as the client's requirements.

A State-of-the-art Project

The result is a building that's a state-of-the-art project. The developed scheme has an organic approach. The functions are separated in different buildings connected at podium facility levels.

It also boasts a rooftop signature feature that hosts various common activities, such as restaurants, a gym, and a spa. The different blocks are identifiable by their different glass patterns. This creates more privacy for hotel tenants and a more transparent environment for the offices.

A large void within the block creates a space that provides views for the tenants of both blocks and acts as an architectural feature. An overall horizontal facade expression dominates the buildings' language and connects the blocks visually while acting as sun breakers. The total built-up area of the project is around 90,000 m².





New Student Affairs Building

Khatib & Alami (K&A) is working on a university building with outstanding sustainable design principles. Located on Qatar University Campus, the designated lot for the new Student Affairs building spans over 64,000 m².

The building boasts two main gender-segregated entrances for students and staff to enjoy their own access to the underground parking, providing a well-distributed traffic load. The new building seamlessly blends in with its surroundings and has three blocks to respect local cultural traditions female, male and shared. Its compact design provides great internal spaces, while minimizing walking distance between departments.

The building features a basement level, a ground floor and three upper floors. The ground floor houses shared spaces, including the reception, recreational facilities, a lecture hall, an auditorium, and the text book section. The first floor houses the learning support, the reception Banking Model and the Career Service Center. The second floor features admission and registration offices. The top floor houses the student counseling center and the Vice President and Assistant Vice President offices. With vast open courtyards, natural ventilation, natural day light, and great accessibility, the building is a motivating and healthy environment for students and staff for better performance and more interaction. Local shading trees provide natural shelter from the sun, while water features refresh the indoors and outdoors climate. The new Student Affairs buildings was carefully designed using green building concept to optimally offer a better and healthier indoor environmental quality, leading to a more comfortable internal experience and higher productivity. This attention to the sustainability of the project is evident through many design elements: architectural, landscaping, building services, and more.

QATAR

Night View



Day View

Targeted 4 Stars "GSAS"
**Global Sustainability
 Assessment System**

The project is being approached by adopting guidelines of the green building rating system, GSAS. A rating of 4 stars is targeted, on a scale of 6 stars. This is considered a challenging target that will result in a truly green building. One that merges a dedication to giving users a space they can realize their true potential in with a genuine concern for the natural environment.

AL BATHA

Tower - Dubai, UAE

Khatib & Alami (K&A) is working on the design, contract documents, and construction supervision for the eye-catching Al Batha residential tower for H.H. Sh. Sultan Bin Mohammed Bin Sultan Al Qassimi.



Night View 



 Day View

Distinctive Architecture

Located on Sheikh Zayed Road in Dubai, this residential tower boasts an area of approximately 47,000 m² with a parking building that includes a health club and a swimming pool with an area of 12,000 m².

The tower and parking are connected by a walking bridge at the 7th floor of the tower and health club floor of the parking. With 44 residential floors in addition to a basement, a ground floor, 2 technical floors, and a roof, the tower is visually imposing. The parking building has 9 floors in addition to a ground floor, a health club, and a pool deck floor. The tower's façade uses a curtain wall that slants outward with every floor and repeats this pattern every 6 floors.

This makes the tower a tribute to contemporary architecture during the day and a landmark at night when strategically positioned lights are lit. The estimated construction cost is \$77 million.



A LANDMARK DEVELOPMENT

WATERFRONT CITY

LEBANON

>> WATERFRONT CITY

is positioned as a Regional Central District since it best mirrors its role and aspirations.

Khatib & Alami (K&A) was commissioned Majid Al Futtaim Properties (MAFP) to prepare a concept master plan for the Waterfront City (WFC) project, located on the Littoral of North Metn (known as "Joseph Houry Marina" in Dbayeh). The scope includes recommending a new vision for the entire reclaimed area and proposing different building typologies and new land uses.

Recommending a new vision for WFC involves identifying what type of future is desired and where means to achieve it are decided. It depicts what the community seeks to become. Identifying the best vision for WFC was the result of a contextual analysis coupled with the client's wish to have a development with social and economic benefits as well as a higher level of cohesion and well being. The vision embodies fundamental values in modern developments, such as the unwavering commitment to ensure every element at WFC has environmental sensitivity and protects its particular context for future generations. The vision objectives will be met through an applied reviewed urban strategy. On the ground,

this means the project's allocated land uses and building typologies will reflect this vision. The areas proposed under the vision include: the Resort, the Community Hub, the Government District, the Promenade, the Business Park, the Residential Communities, and the Corniche. Moving the reclaimed area from where it is today and in the direction of the aspired vision is best captured in the following vision statement: "Providing a livable and memorable Regional Center comprised of symbiotic, sustainable neighborhoods coupled with unique infrastructure." This vision will ultimately pave the way for a developed urban precinct that residents and visitors can both benefit from.

Schools Master plan for the State of Qatar

Intelligent Solutions for Education



Qatar has developed exponentially in the last two decades, becoming one of the richest countries in the world. With its major aggressive expansion plans, Qatar witnessed huge growth in its urban settlements and population, which led to an ever-increasing demand on all public services such as health, recreational, commercial, and education.

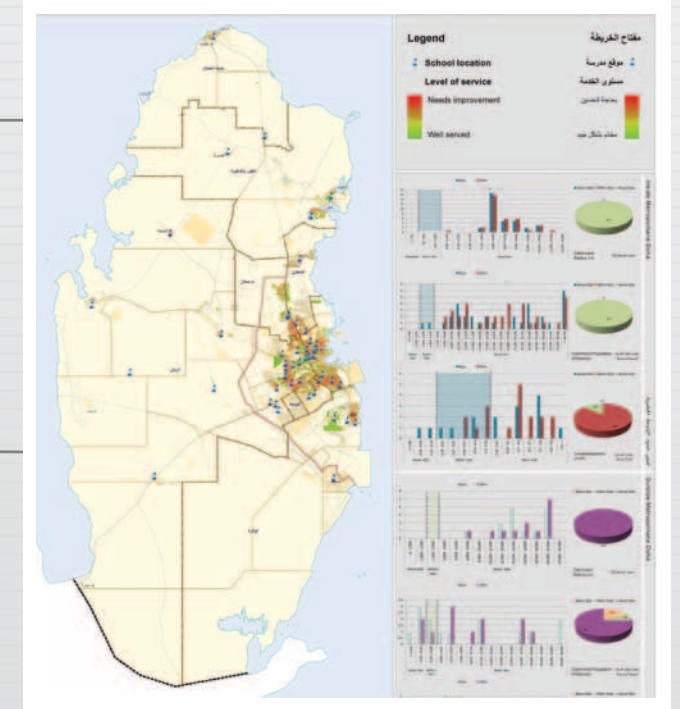
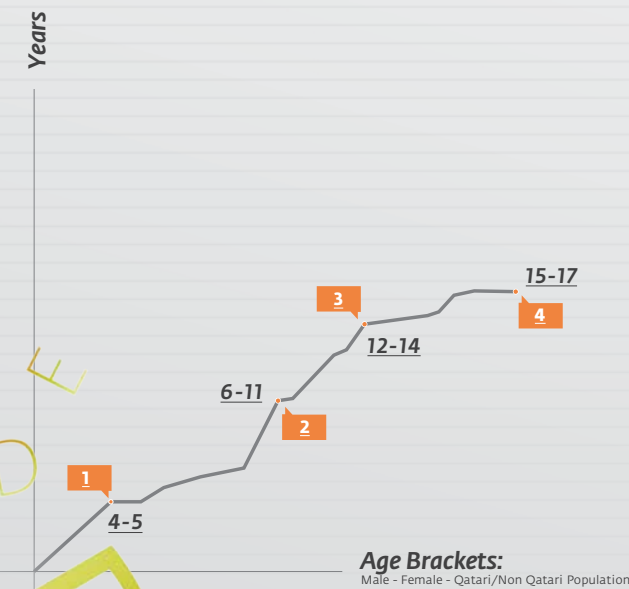


Consequently the Supreme Education Council, the governmental body responsible for education services in Qatar, launched a new project to study and enhance education services not only for the present but also for the future with a horizon of 2030. The project is one of the strategic governmental initiatives.

Khatib & Alami (K&A) was awarded this project, thanks to its successful implementation of "Where is My School?" System, in addition to its success with another similar project for the assessment and distribution of health facilities (done for the Supreme Council of Health). This project will provide a state-of-the-art solution that captures

and assesses the allocation of education facilities in the country. It will offer solutions to the deficiencies detected, rectify the distribution of public education facilities, and use an intelligent and dynamic model to forecast future needs based on demographic information and child yield indicators. To achieve all this, K&A is making use of its exceptional Urban Planning and GIS expertise.

K&A is handling the full implementation of the Geo-Planner project and the close collaboration between the GIS and Urban Planning teams is the backbone in formulating the truly sophisticated urban planning analysis methodologies and techniques with advanced GIS - Urban analysis capabilities.



The project is expected to reach completion by April 2015.

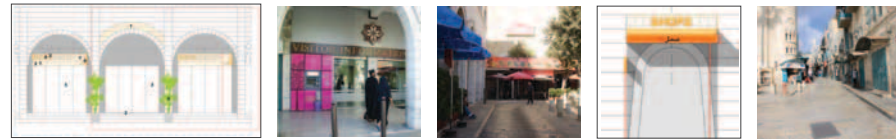


THE REBIRTH OF A GREAT PLACE:

Manger Square

Bethlehem, Palestine

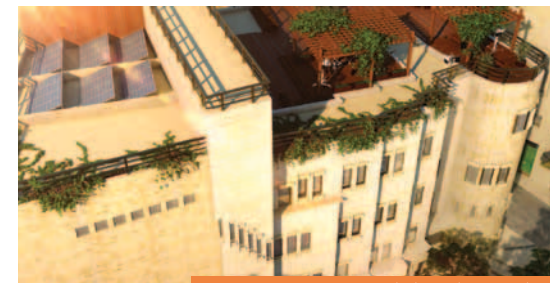
Manger Square is the iconic center of Bethlehem. It's a hub for religious activities and festivals that celebrate the birth of Jesus Christ. It's also a great tourist attraction and is a place brimming with historical significance. And yet over the years, this important part of the city has suffered from the wear and tear of time.



Church of Nativity and Omar Mosque at Manger Square

In light of this, the Bethlehem Development Foundation decided to launch a grand beautification and rehabilitation project to bring Manger Square back to its state of glory. This project will also help accommodate the thousands of visitors arriving from all over the world each year. Khatib & Alami (K&A) is proud to be playing a central role in this fascinating project which bridges the past with the present. The firm has envisaged diverse solutions and an approach to urban planning that take into account harmony, history, simplicity, and clarity.

The roofs of the surrounding buildings are being converted to green roofs with living walls. Rainwater harvesting will recycle runoff water that can then be used for landscaping, irrigation and maintenance. Light-weight kiosks have been designed to host media crews during festivals. The decking used is recycled (and recyclable) plastic lumber. Solar farms will harness solar energy for the municipality's use.



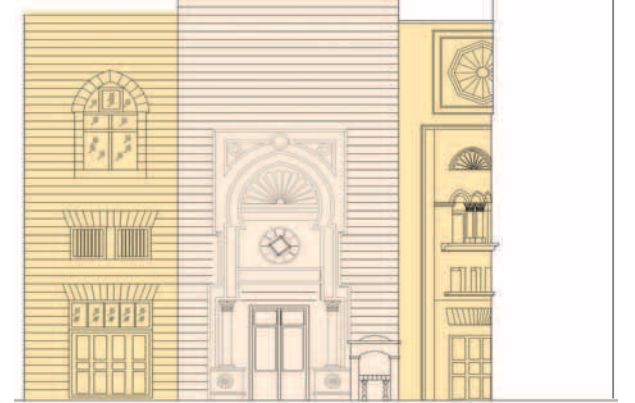
New Municipality Building

The surrounding facades have been vastly enhanced by pressure washing, painting, planting, and re-tiling. Ambient up-down lighting has been introduced to accentuate the architecture around the square. Even guidelines have been developed to regulate shop signage around the square, as well as road signage, and interactive information boards for users and visitors. Another unique touch is that the trees in the square will be lit with in-ground spot lighting that changes tint according to the season.

Omar Mosque

Elevation Analysis

- * Special improvement
- In need of major improvement
- In need of minor improvement
- Contributing to the square, may need minor improvement



The processional route is lit at night with special dimmable flood lights that visually highlight the historical route which begins from Jerusalem Gate (via Star Street) and ends at the Church of Nativity, passing by Omar Mosque and Manger Square. This special lighting emphasizes a message of peace and integration. All these distinctive elements come together to make Manger Square the remarkable place it deserves to be.

Peace Center Cafe



K&A Launches into Assir Strategic Master Plan - Phase II

Assir Region - KSA

Khatib & Alami (K&A) was awarded the "Assir Strategic Masterplan for Water and Wastewater - Phase II" project by the Ministry of Water and Electricity (MOWE) in the Kingdom of Saudi Arabia, represented by the Assir General Directorate for Water.



22 Sub-projects

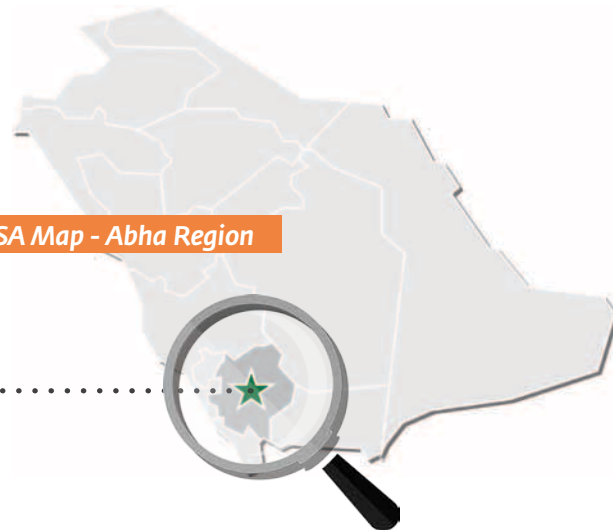
Assir Master Plan

The region is one of the most sought-after touristic attractions in Kingdom of Saudi Arabia because of its unique weather. After the successful completion of Phase 1 of the master plans which addressed issues of new developments and the increasing population, the Water Directorate at Assir awarded K&A the "Assir Strategic Master Plan-Phase II" project, which focuses on the final design of water supply schemes and wastewater disposal systems of Assir's governorates. This large scale project has 22 sub-projects under its vast umbrella. The estimated construction cost is \$480 million and the project is expected to reach completion in December 2016.

Water Directorate at Assir awarded K&A the "Assir Strategic Master Plan-Phase II"



KSA Map - Abha Region



A Solar Powered Achievement:

BRSS Project

Khatib & Alami (K&A) has been commissioned by the Lebanese Ministry of Energy and Water's Lebanese Center for Energy Conservation (L.C.E.C.) to work on the ground-breaking Beirut River Solar Snake (BRSS).

K&A is using its expertise to deliver a professional Environmental Impact Assessment (EIA) study, the complete structural analysis and meticulous construction supervision.

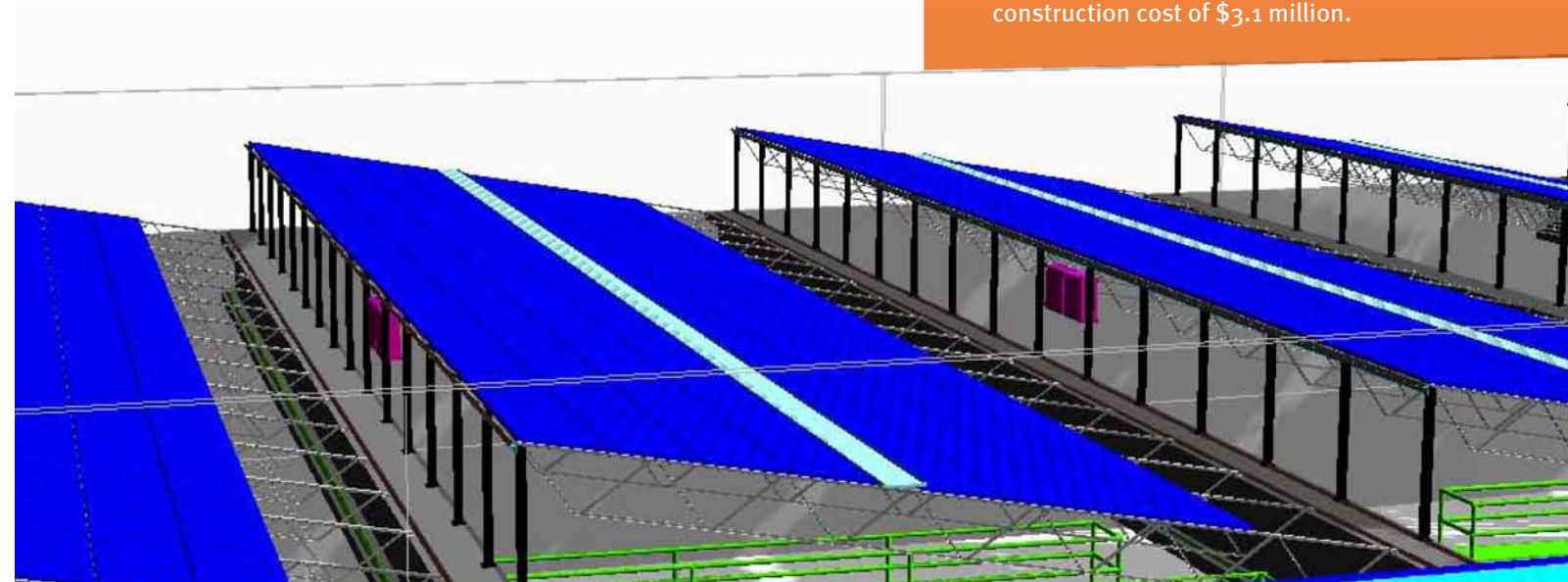


BRSS is not an ordinary project; it is a key milestone in renewable energy that will transform Beirut River's channel into an energy generating accomplishment. Using solar panels (a photovoltaic farm) to harvest energy from the sun, BRSS will result in zero emissions and no noise, air, soil or water pollution.

This energy will play a central role in assisting Electricité du Liban in reaching its 12% renewable energy goal by 2020 under the government's National Energy Efficiency Action Plan (NEEAP). The current phase of this project is 325 m long and will produce 1 MW of electricity annually and 10 MW after the implementation of the remaining phases. The photovoltaic farm has a fully suspended design with no obstruction in the river. The project is the largest of its kind on a national level and aims to spark the start of positive change in the way Lebanon produces its energy.

To bring this pivotal project to life, K&A is collecting data, conducting site visits and interviews, and coordinating with local authorities. K&A is also reaching out to members of the public and stakeholders to gain insight into their concerns and opinions. In addition to this, K&A is preparing an Environmental Scoping Document (ESD) and a detailed Environmental Impact Assessment (EIA). Based on this, the firm has described appropriate measures to be implemented during the construction and operation phases to ensure environmental sustainability. And last but not least, K&A will be handling the construction supervision.

The project will be completed in 2015 at a construction cost of \$3.1 million.



Yanbu

Emergency Sewer Plan:

KSA

Four weeks to deliver six design-build projects



Yanbu Wastewater Emergency Action Plan Layout

Khatib & Alami (K&A) successfully completed the Yanbu Emergency Wastewater System Action Plan. K&A produced six design-build projects that served the majority of populated areas in Yanbu.

Yanbu, an industrialized and touristic city that attracts international investors, is currently experiencing rapid population growth and major urban development. The Yanbu Emergency Sewer project will offer a reliable system that serves the daily needs of Yanbu City. Because of the peculiarities of this pressing situation and the real urgency involved, the Minister of Water & Electricity assigned the National Water Company (NWC) to manage an emergency action plan. This gave NWC the opportunity to operate in Yanbu for the first time.



HRH Prince of Madinah during the Meeting

Because of K&A's fast track capabilities and extensive experience in Yanbu, the firm was awarded the Yanbu Emergency Sewer Project (with a Direct Award Contract). The extensive project came with unique challenges, especially since K&A's team only had four weeks to deliver. The scope included producing tender documents to tender out projects for the design-build of sewage pumping stations, lift stations, sewer networks, and house connections for several zones in Yanbu City. To ensure professional design within the tight time frame, K&A capitalized on the potential of its superior team and expertise to deliver a cost effective, technically up-to-date, and sustainable approach to this massive project. The work for this project was presented to His Royal Highness Prince of Madina Region who commended the effort and excellent outcome.

Developing

ROADS and INFRASTRUCTURE - UAE



Khatib & Alami (K&A) is working on Dubai Properties Group's (DPG) Arjan Development and Community Facilities. This prestigious project was initially proposed in 2007 as a mixed-use development that encompasses residential, commercial and community facilities.

A R J A N

Arjan Development was put on hold in 2008 because of the global economic slowdown and it is only now that the project has been relaunched. K&A is continuing work on the master plan and infrastructure design. The scope of services include the master plan review and revalidation, the tie in connection to Road and Transport Authority (RTA) roads, the sewerage network, the stormwater drainage network, the combined irrigation and firefighting network, pumping stations and electrical works to pocket substation services. Arjan Development spans around 186 ha and is located to the southeast of Dubai City Centre in the North-West corner of Dubailand. The land is flanked by Sheikh Mohammad Bin Zayed Road and Umm Suqueim Road, thus forming the western gateway into Dubailand. This development's proximity to the EXPO 2020 location in Dubai makes it highly attractive. The estimated cost of this project is \$82 million.

Improving Al Andalus and King Abdullah Road Corridors - KSA

An Awarded Project

The Municipality of Jeddah awarded Khatib & Alami (K&A) a contract to study and design improvements to the capacity, safety and aesthetics of Al Andalus and King Abdullah Road corridors, including a number of key strategic junctions and interchanges.



Al Andalus Road



is a major North-South road located between the junction of King Fahd road with Al Falah road and the interchange with Tahliyah on the southern side of Jeddah, making it a primary route within Jeddah's strategic transportation network.

King Abdullah Road is a major East-West arterial road which starts from the Tariq Bin Ziyad Roundabout (known as the Ships Roundabout by locals) and has several major junctions along it, including the Flyover at Ha'il Street and the strategic intersection connecting Madinah Road. The roundabout and junctions have significant congestion and safety problems.

K&A aims to relieve congestion and safety concerns while upgrading the corridors in addition to the Tariq Bin Ziyad Roundabout, the Municipality at-grade intersection and the King Abdullah/Madinah Road Interchange (plus other junctions if found necessary). To successfully achieve this, K&A will examine existing conditions; develop at least three viable options to improve major junctions and the corridors; implement solutions to increase road safety; effectively address access management issues; work on street lighting, public illumination, beautification, landscaping, and pavement design; and provide a framework for better utility maintenance.





Package 1: Review and update of Jeddah's public transportation master plan.

Package 2: Metro Services (3 lines: 152 km with 52 stations).

Package 3: Commuter rail service (93 km and 7 stations).

Package 4: Corniche Tramway System (48 km and 46 stations).

Package 5: Buses from BRT to feeder buses and long journey coaches (840 km with 3800 stops).

Package 6: Marine ferries and Water Taxis Services (94 km).

Package 7: Al-Muntalaq multi-modal station.

Package 8: Obhur Creek Bridge and secondary bridges (including approaches, highway infrastructure and all relevant services).

Package 9: Park and Ride automated multi-story facilities.

Package 10: System wide elements and land acquisition requirements.



Jeddah PUBLIC TRANSPORTATION PROGRAM (JTP)

A Truly Unique Public Transportation Project

A 10-Packages Project

Khatib & Alami (K&A), in a joint venture with SYSTRA, Artelia, and AREP, is working on the Preliminary Engineering Design (PED) Consultancy Services for the Jeddah Public Transportation Program (JTP) for the Jeddah Metro Company. This impressive project is divided into 10 packages to optimize the workflow and yield the best results.

In addition to traditional work (topo, geo, utilities relocation, etc.), K&A is handling the rearrangement of surrounding roads, roadway drainage, local traffic arrangements and Traffic Management Plans (TMP).

The JTP is unique and no other transportation program in the entire world matches its magnitude. The massive project reflects an ambitious and holistic vision for the city where advanced technology, environmental considerations and safety merge to offer modern and sustainable transportation for all while preserving the Kingdom's cultural and Islamic traditions. This key, life-enhancing project, is crucial to support Jeddah's growing population well into the future. Combining mass transit systems, light rail, buses, ferries and mixed-used facilities to create an integrated system, this project requires tremendous effort and know-how to meet the challenging deadlines.

Enterprise GIS

Design and Procedure Development for

Oman Electricity Transmission Company (OETC)

A Turnkey Project with OETC

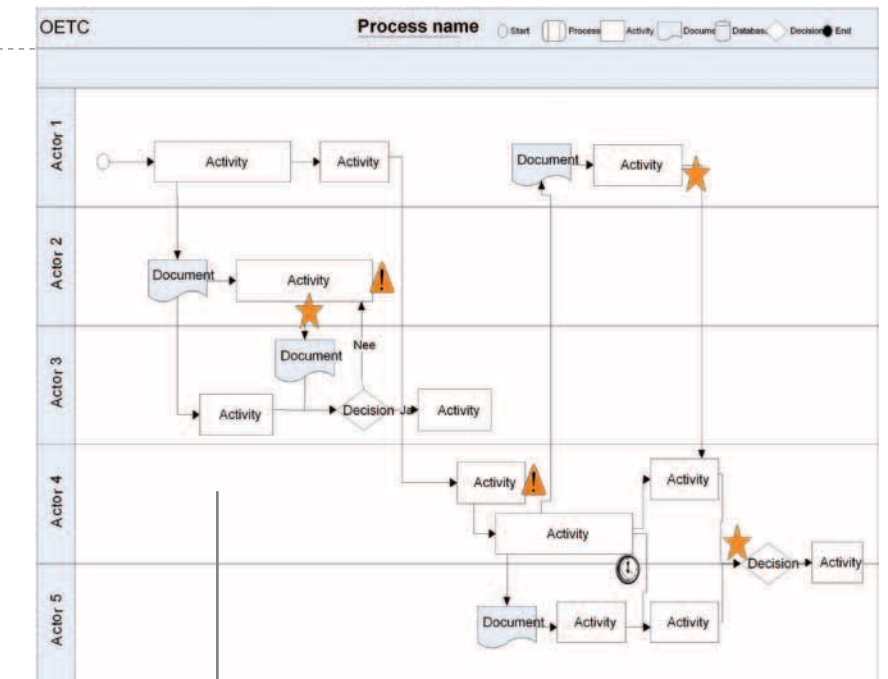
After having successfully worked with most of the electric and water utilities on GIS implementations and developments in the Sultanate of Oman, the Energy & Utilities Department (EUD) at Khatib & Alami (K&A), managed jointly with DNV KEMA to take over a turnkey project with OETC, the sole franchised electricity transmission company in Oman.



After OETC underwent restructuring during the first half of 2014, and following the standardization of procedures for most of its departments including O&M, projects and transmission, OETC is finally looking into benchmarking the workflow of its newly established GIS section and integrating it with OETC's processes for asset life cycle management based on PAS 55/ISO 55000 (paving the way towards international asset management standard accreditation).

This project is based on a number of business drivers to meet OETC's strategic objectives among which are: relying on the best and latest data structures of electrical transmission modeling for GIS; standardizing policies and procedures for use by OETC's GIS section; ensuring there is a business focus; and empowering the user base.

Workflow mapping using Swim Lane Technique



DNV KEMA International is a multinational electrical consultancy firm which already has experience with OETC's existing procedures and workflows. It worked on mapping and standardizing processes for O&M and projects departments at OETC. It will cooperate with K&A to develop the GIS update mechanism and integrate GIS processes with OETC's workflow for asset lifecycle management which starts with network planning and design passing through operations and maintenance until the final disposal of network assets.

The EUD at K&A continues its commitment towards extending services to additional clients in Oman while strengthening the relationships with existing clients. It also always maintains higher levels of adaptability with evolving business challenges and produces impressive results that are recognized in the energy and utilities sector in the MENA region.

The project started on October 28, 2014 and is 10-month long. The total value is \$350,000.

OETC wants a solid infrastructure for its GIS with smart grid implementations and integration with SCADA, Computerized Maintenance Management System (CMMS), and Energy Management System (EMS) among other systems. The project aims to provide an efficient and scalable mechanism for OETC's GIS to support core business areas including planning, operation and maintenance, and asset management.

The project starts with the design of OETC's GIS data model using a Unified Modeling Language (UML) based on the latest electric transmission data model practices. These are tuned to suit the asset hierarchy of OETC's network and the asset registry strategy so it's easy to later incorporate any additional internal workflow data needs that may be facilitated using GIS.

In addition to this, seamless data migration will be conducted from the existing OETC geodatabase into the newly developed schema accompanied by meticulous data quality assurance and quality control. This will be carried out by K&A's electrical utility engineers who have substantial experience. The next step is the data conversion into GIS of the OETC's backlog network updates in AutoCAD and Excel files. To minimize errors resulting from the data conversion process, many automated QA/QC routines, developed through years of K&A's know-how in data quality, will be used. K&A will also configure OETC's ArcGIS server standard and its web client features after upgrading the system to the latest mature utility release (10.2.1.).



LIVE SMARTER WITH GIS

The day launched with interesting case-studies and success stories on the use of GIS applications within Lebanon. The interaction between the speakers and the audience was truly dynamic during the Q&A sessions after each presentation.

The first presentation was on GeoDesign at Qaraoun Lake by Rami Alouta, a senior landscape architecture student at the American University of Beirut (AUB). He discussed how a development plan can be created for an urban, ecological, and agricultural area through the use of Esri Landscape Modeler and how the GeoPlanner for ArcGIS can be used to develop urban cities and agricultural land.

GIS Usage

Mohammed Nasrallah, a lab instructor at the Lebanese International University (LIU), gave a presentation on how GIS was used as a mapping visualization and analytical tool to assess Lebanon's railway situation. Ali Tormos, a Surveying Engineer from the Islamic University of Lebanon (IUL) and a Civil and Environmental Engineer, did a presentation on the Municipality Decision Support System (MDSS) and how its beneficial capabilities can aid any municipality in strategic decisions whether it's for real estate development or traffic management.

November 19, 2014 marked another milestone for Lebanon's GIS community. Esri Lebanon greeted GIS enthusiasts in Lebanon for the annual worldwide GIS Day at Crowne Plaza in Beirut. Attendees were a vibrant mix of aspiring students and well-experienced professionals.

GIS Awareness

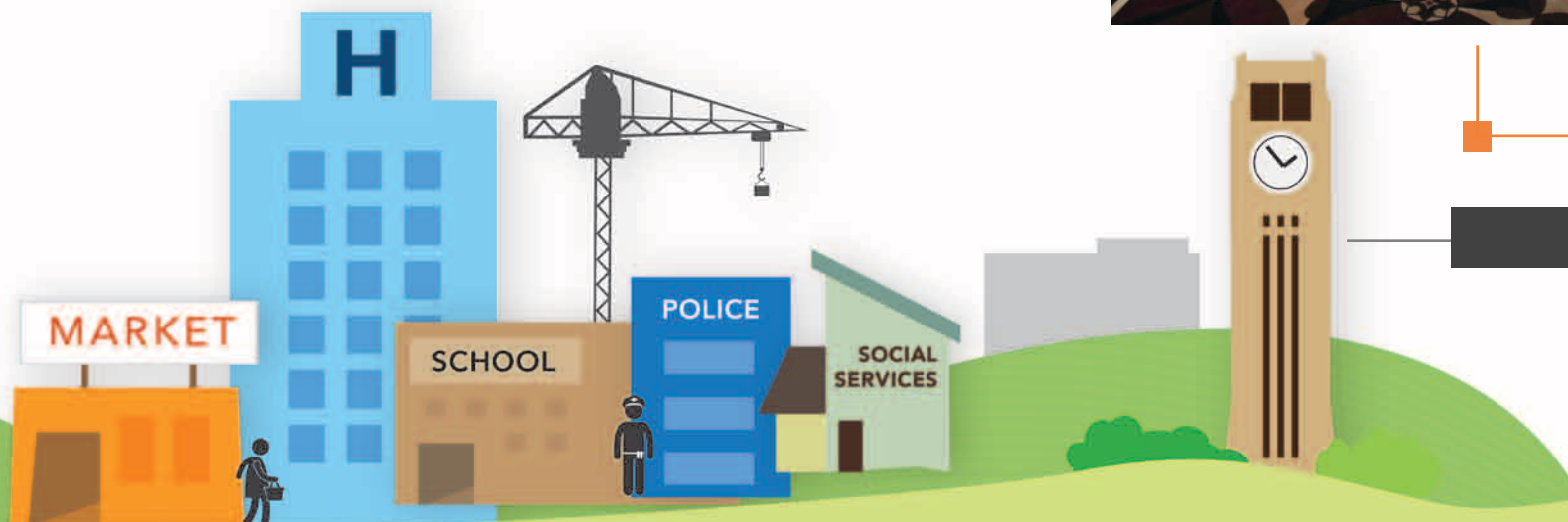
Nicole El Hayek, a GIS and database officer, spoke about how GIS can be used for more efficient humanitarian support for relief distribution and aid follow-up. This revealed that the potential of GIS to enhance the quality of life is infinite! Esri Lebanon's Philippe Abi Dargham spoke about GIS Awareness for Schools and the StoryMap Competition Esri Lebanon created for the K11 students of Champville School. It is inspiring to know that GIS technology transcends age limits.

A break followed giving everyone a great opportunity to network and share their thoughts on GIS and its implication in the Lebanese community. Attendees were also invited to vote for the topic they liked most of the morning sessions.



GIS Presentation

After the break, the lively event continued with a short video on GIS. A presentation on Smart Cities was then given by Hassan Dennaoui, the Commercial and Public Safety Manager at K&A's GSI division. From aging infrastructure to declining budgets, changing population, and increasing threats, certain contemporary problems can be solved using GIS. K&A's strategic partnership with IBM's Intelligent Operations Center (IOC) provides a situational-awareness map view with KPIs based events and incidents. And it is now possible to display all information on one map. "Empowering the Enterprise with Location Analytics" by Yehya Hassan, a Solutions' Engineer at Esri Global Office in Dubai focused on Location Analytics, its great products, and more. "What's New in ArcGIS for Server 10.3 & Extensions" by Mazen Mrad from the Software Development team at K&A provided an in-depth update on what is new in the upcoming and highly anticipated ArcGIS 10.3 for Server. And last but not least, "Web AppBuilder for ArcGIS" by Aki Barakat and Dany Sleiman from K&A's Solutions & Products unit, introduced Web AppBuilder, emphasizing its benefits.



GISday



Going Platinum and Sharing Expertise



Khatib & Alami (K&A), the leading Geospatial Systems integrator and the first Esri and Schneider Electric Platinum Partner in the entire Middle East and Africa, participated in the Esri Middle East and Africa User Conference (MEAUC) as a Platinum Sponsor. This event was held in Kuwait from the 20th to the 22nd of October, 2014.



It was a great opportunity for GIS professionals throughout the region to discover the latest advances in GIS technology and its wide range of implementations. MEAUC is a great platform for attendees to learn from Esri staff, network with GIS colleagues and update their knowledge with the latest technology news and trends in various industries.

A Sponsored Utilities Track

With its proven track record as a leading Geospatial Systems integrator in the utilities and energy sectors, K&A sponsored MEAUC's Utilities Track. The Energy and Utilities (EUD) team showcased some of K&A's capabilities that transform traditional utilities businesses into new digital high-performance enterprises via GIS technology.



A Platinum Sponsor



Presentation

The presentation highlighted how K&A's Utility Solutions can support energy agencies and utilities in improving their business operations, service quality, and customer satisfaction. How? By providing them with best practice implementation strategies and most cost-effective solutions. The track included presentations and demonstrations about K&A's implementations in the region that truly exhibit the benefits of integrating and configuring GIS technology with enterprise IT and real time systems including Geospatial Utility Solutions, Smart Grid Solutions (AMI, ADMS, CRM, Billing and MDM, and Asset Management). This makes utilities more spatially aware and thereby enhancing business and operational decisions.

Firm's Background

K&A was also a panelist in the National Mapping and Spatial Data Infrastructure (SDI) Expert Panel Roundtable. This was a chance to showcase the firm's excellent background and broad experience. The session defined National Mapping and SDI, described its purpose, the biggest obstacles that must be overcome and the opportunities that should be taken advantage of to drive an information federation forward. It also pinpointed the best place to start, and discussed the "next generation" of National Mapping and SDI. It even explored the effect of location-based services, social media, sensor networks, big data, intelligent infrastructure, and other emerging technologies and methods on the definition and evolution of National Mapping and SDI. The event was very interesting and K&A is keen to participate and make the Esri Middle East and Africa User Conference a success in the years to come.



Jazan GIS Project:

Jazan Municipality - KSA

AWARD AND PRESENTATION TO

His Royal Highness (HRH) Prince Mohamed Bin Naser Ibn Abdulaziz

An Awarded Vital Project

Khatib & Alami (K&A) – GSI was recently awarded a vital project by Jazan Municipality of Saudi Arabia. The project entails establishing a GIS center in Jazan Municipality. Launched on April 29, 2014, the project is expected to span four years.



This project will not only support the entire region of Jazan, but has several objectives. These include gathering data, creating a system design, and providing a User Needs Assessment. The project will also develop the Spatial Data Model, GIS applications, and E-services. This significant project will pave the way for numerous real benefits on many levels: from an updated digital base map for the whole region to a data bank for Jazan Municipality and related municipalities, GIS web applications that support building Enterprise GIS, Electronic Services Applications that support E-Government, and the development of Municipality employees through training.

Presentation

This major presentation was in the presence of Jazan Mayor, Deputy Jazan Mayor, the Municipal Council for the Jazan region, and Jazan Governorate department managers. The presentation lasted 40 minutes and then HRH Prince Mohamed Bin Nasser Ibn Abdul-Aziz shared his feedback, highlighting the goals and output of the project. The team accordingly noted the points to be taken into consideration. The presentation began with a word by Jazan Region Mayor. After this overview of the project, Engineer Marwan Saadeh, the K&A Western Region Resident Manager, launched the presentation by thanking the Jazan Governorate for their confidence in K&A. Geospatial Services Department Manager, Manal El Sayed, spoke about the goals of the project, the myriad benefits to Jazan municipalities, and the history of K&A in the field of GIS in the Gulf.



HRH Prince Mohamed Bin Naser Ibn Abdulaziz mentioned that there is plenty of available data amassed from the different projects currently under development such as: the Economical City, King Abdullah District, Geological Survey Organization, Saudi Aramco, and Industrial City; hence, this wealth of data should be utilized for this GIS project. The Prince then announced his wish to use this project to develop the slum areas in Jazan. Since the region is developing a mega project in the near future, the lack of a basemap is an obstacle towards regional development. The Mayor of Jazan, Mohamed Bin Humod Alshayea, added to the Prince's recommendations, mentioning that Jazan Municipality is keen to make the most of all the data available from the different projects and that data security will be upheld by all parties.

His Royal Highness requested that all the future projects be located on the basemap for optimal planning. He also requested that the data of metallurgical resources and historical places be located on the basemap. The Mayor mentioned that Jazan Municipality will hold a workshop about newly developed projects and that the new basemap should serve these projects.

ENR

Engineering News-Record

Stamp of Excellence

2014
Rankings

#47

in The Top 225
International Design Firms

#7

The Top 10 by Region
in the Middle East

This year, Khatib & Alami (K&A) was ranked number 47 on the Engineering News-Record's prestigious and globally renowned list of Top 225 International Design Firms. K&A was also ranked 7th in the entire Middle East. These impressive rankings are testament to K&A's professionalism and specialized expertise. In 2013 alone, K&A worked on many diverse projects: 44 general building, 2 power, 11 water supply, 6 sewer/waste, 7 industrial/petroleum, and 23 transportation.

enr.com July 28/August 4, 2014

▶▶▶ K&A

Energy Ambassador of the Year



Beirut Energy Forum Awards

Khatib & Alami (K&A) winner of the "Energy Ambassador of the Year" in the Lebanese company category at the Beirut Energy Forum Awards.



The award was handed to Mr. Samir Khatib Director - Area General Manager for Lebanon, Saudi Arabia and Syria.



Dedicated to energy efficiency, renewable energy, and green buildings, the Beirut Energy Forum's 5th annual event was held from September 17 to 19, 2014 at Le Royal Hotel Dbayeh, under the patronage of H.E. Mr. Arthur Nazarian, Minister of Energy and Water. The forum brought attention throughout the region and featured a full-blown conference, an exhibition, and an awards ceremony that revealed the winners of the four highly competitive categories.

Winning the Public in **ALGERIA**

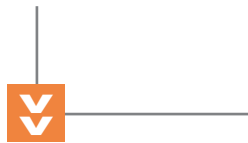
Khatib & Alami (K&A) participated in the 12th edition of the “Salon International des Travaux Publics”(SITP) from November 19 to 23, 2014, at the Palais des Expositions, Pins Maritimes, in Algiers.



The event was under the high patronage of H.E. President Abdelaziz Bouteflika, and in collaboration with the Ministry of Public Works and the Algerian Society of Fairs and Exhibitions (SAFEX). The fair, “Public Works: Development and Modernization”, brought together many industry professionals and 429 exhibitors, including 217 Algerian firms and 212 overseas firms from 19 countries: China, Italy, France, Germany, Turkey, Spain, India, Tunisia, Belgium, Austria, Netherlands, Denmark, Indonesia, Portugal, Poland, Lebanon, Russia, and USA.



Mr. Abdelkader Kadi, the Minister of Public Works stated: “This international scale event has become a suitable space to share experiences and seize partnership opportunities in the field of public works.” The fair also boasted high caliber organizations from diverse sectors, such as the National Highway Agency, the Algerian Society for Highway Management, the National Institution for Public Works Technical Monitoring, and the National Laboratory of Maritime Studies.



K&A had a personalized booth that truly stood out and showcased its remarkable international projects. In addition to this, the “Salon International des Travaux Publics” was a very successful event for K&A. All visitors, including professionals and top management from different ministries and governmental agencies were impressed with K&A’s size, know-how and experience. As Tarek Abou Abdallah, Africa’s Director explained, “The Minister of Public Works, accompanied by the Minister of Telecom and Minister of Tourism (responsible for all hotel projects in Algeria) asked the Governor of Algiers (Wali) to commission nice buildings in the capital similar to the ones displayed at K&A’s stand.”



LEBANON – SAUDI ARABIA – UNITED ARAB EMIRATES – OMAN – QATAR – BAHRAIN – KUWAIT – JORDAN – PALESTINE – SYRIA – IRAQ
EGYPT – LIBYA – ALGERIA – MOROCCO – SUDAN – ETHIOPIA – GABON – KAZAKHSTAN – BELGIUM – UNITED STATES OF AMERICA